

# MAGIC'S Coconut Light User Menu

**Attention**

## Main ball

Non-toxic silicon  
Diameter 145mm

## ML2

Maxima: 0.5w LED X 3  
Lithium polymer battery 300mAh  
Version: Warm white (3000k)  
Colorful light RGB

## Cap

Switch  
Balance point  
Extension strap

## Battery life

### MCL (Warm white)

Mode1	100%	1.5H
Mode2	50%	10H
Mode3	30%	30H
Mode4	Breathing	8H

### MCL-C (colorful light)

Single color mode	3H
Auto mode	3H

## Charging time

For any USB charger can be fully charged in 1 hour.  
(After fully charged, standby time: 3 months)

1. Please keep the ball away from sharp objects to avoid any damage.
2. Keep cables away from kids.
3. Dry the charging port before plugging in.
4. Air pressure in Coconut Light is the same as atmospheric pressure.  
It doesn't have the pressure of a usual bouncing ball spheric pressure inside.
5. Charging cable is specifically for coconut light only.  
Refrain from using it for any other purpose.
6. Avoid keeping the ball folded for over 8 hours to avoid deformation.
7. To maintain battery life, please charge at least once every 6 months.
8. Avoid contact with detergent or other chemical products.
9. When bouncing Coconut Light, please refrain from using excessive strength and avoid hard sharp objects.
10. Dirt might accumulate on waterproof layer in charging port.  
Clean it with non-conductive material.



## Instruction

### How to remove the cap

1. Remove the strap, place your thumbs as shown in the picture.
2. Compress the ball with your index finger and pinch the cap.
3. Turn the cap counterclockwise all the way.
4. Remove the cap.

### How to install the cap

1. On the bottom cover, align the USB notch with the screw on the right side of the reference mark and fit on the cap.
2. Turn the cap clockwise.
3. Rotate the USB notch until the reference mark is completely aligned.

### How to charge

1. Lift the cap cover, and plug the USB charger into the charging port.
2. There is a dim orange light when charging. The dim orange light will be turned off when the power is full. (only seen in darkness.)
- ! If coconut light is submerged or still damp, please dry the charging port completely before plugging in any power.

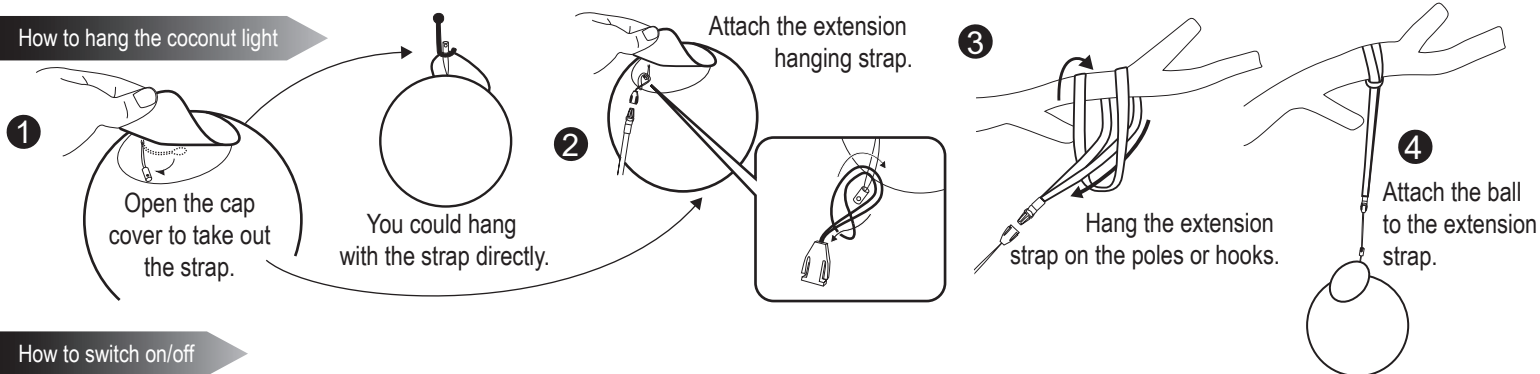
### How to fold the coconut light into the carrying bag

1. Remove the cap.  
★Please refer to instruction "How to remove the cap"
2. Fold the ball inwards with left hand as shown in the image below.
3. Fold the ball backwards and put the cap back.
4. Put the folded ball into the bag, aligning one side with the bag.
5. With your right hand, press the bag with the ball inside. Zip the bag with your left hand.

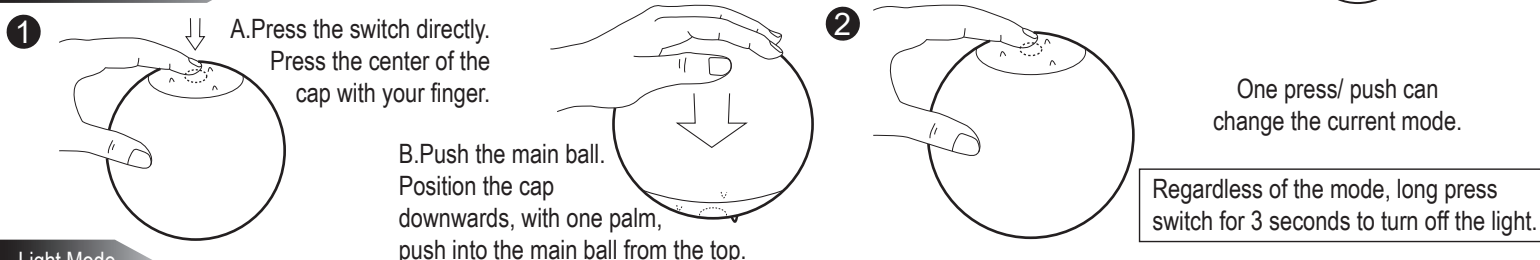
### How to add pressure into the ball

1. Flip up the cap cover.
2. A. Blow air into the ball through vent hole.  
OR  
B. Inject air into the vent hole with an air pressure gun.
3. Seal the vent hole with sticker.

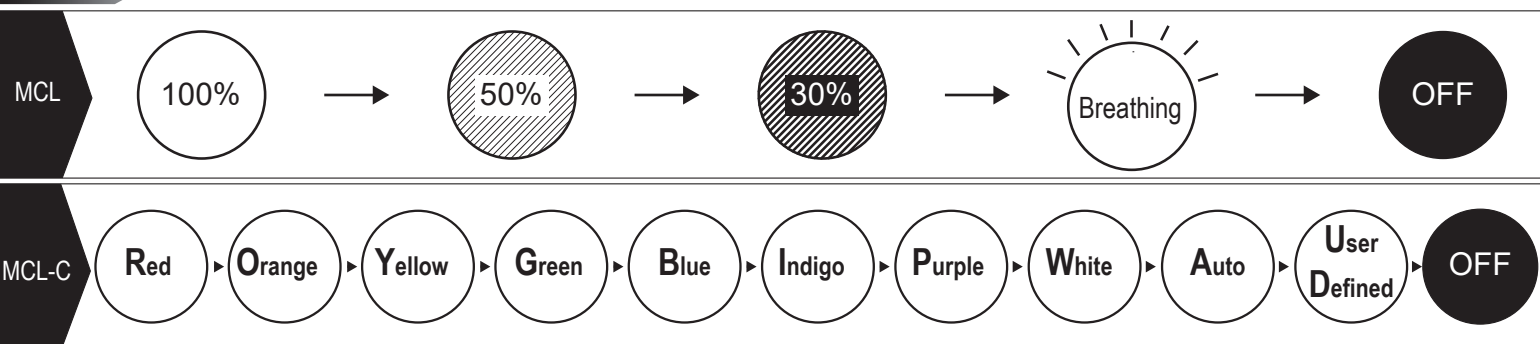
### How to hang the coconut light



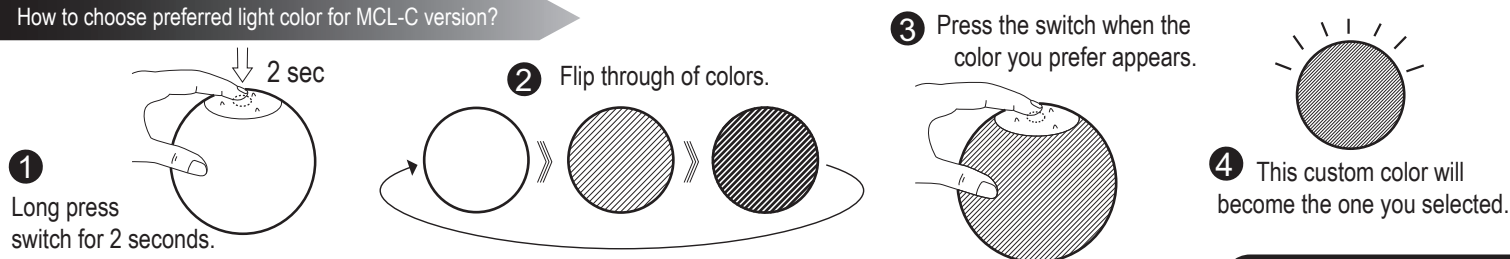
### How to switch on/off



### Light Mode



### How to choose preferred light color for MCL-C version?



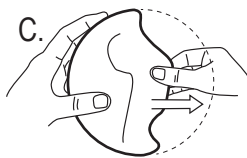
### Problem and Solution

#### ◆ Why can't the cap be removed?

Due to the air-tight design, more strength is required to turn the cap. Please refer to the operating instructions "How to open the cover" to remove it.

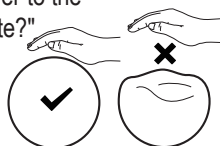
#### ◆ Why doesn't the ball self-inflate?

The ball shall self-inflate within 10 minutes. If it doesn't self-inflate, please follow these steps:  
A. Check if the vent hole is blocked.  
B. Poke the vent hole.  
C. Manually pull the main ball cover outwards.



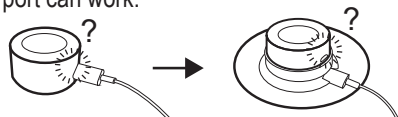
#### ◆ Why can't I turn on/off the light by pushing the main ball?

Due to insufficient air pressure in the ball, the push on the main ball unit cannot be translated to the switch. Please refer to the Problem and Solution "Why doesn't the ball self-inflate?" to inflate and add pressure to the ball.



#### ◆ Why doesn't the charger work?

1. Make sure USB power is functional and switched on.  
2. Check if USB port is clogged up.  
3. Separate the cap from the main ball. First test if the light module can be charged separately. Second check if it is well-attached to the cap. Third, check if the cap charging port can work.

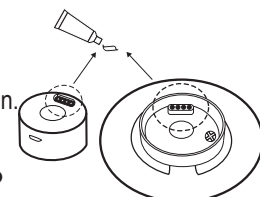


#### ◆ Why doesn't the ball bounce?

The ball is inflated at atmospheric pressure. To bounce it, add pressure into the ball and use the seal. 1. Check if the vent hole is blocked. 2. Check if you used the sticker over the vent hole.

#### ◆ Why is there gel on the charging pin?

The gel is waterproof gel, which is used for waterproofing and Anti-oxidation.



#### ◆ How to drain the water left in the ball?

Due to the light module, there is the high inner wall which makes it hard to drain water from the main ball unit. You can use a towel or napkin to soak up the water and then air dry the ball in shade.

#### ◆ Why does the main ball get dirty easily?

In order to be child and pet friendly, there is no coating on the main ball surface. If the ball gets dirty, please rinse it with water.



#### ◆ Why does the air leak when I press the ball?

If the air leaks, it might be due to misalignment of the gasket seal. Please use a small pin to adjust the gasket back to the cap groove.

